

CAF® CASE STUDY

Egg Processing



CAF unit installed at an egg ranch/plant.

Problem:

This eggplant, located in Southern California, produces approximately 6 million eggs per week. During the process and preparation of these eggs, some break and fall on the floor where they are washed into floor drains and mixed with the egg wash water.

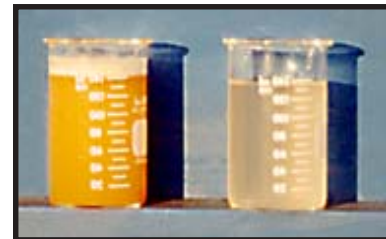
The mixture of broken eggs and wash water is discharged to a balance tank and then sent through a settling clarifier. The settling clarifier, however, was not meeting the new EPA regulations.



A thick layer of solids floating on the surface prior to discharge.

Solution:

Hydrocal's scheduled a trial, which immediately demonstrated that the CAF unit would achieve results well within the new regulations and a unit was installed.



Before After

CAF Performance		
	<u>Influent</u>	<u>Effluent</u>
Gallons per day	30,000	27,800
pH Adjustment	11.0	7.0
Suspended Solids	2,200 ppm	20 ppm
Chemical Cost Per Day = \$20.00		



Clear Effluent

The Solution is Clear.